

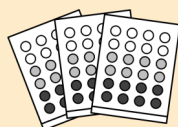
## Objective:

To enable students to safely identify areas where bullying takes place, and jointly develop with school staff solutions for reducing bullying in these areas.

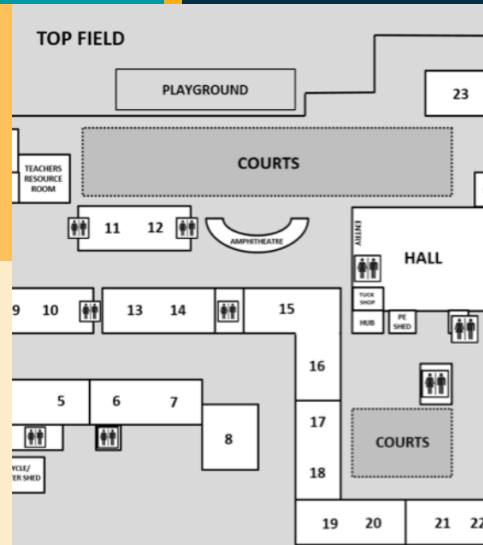
## Materials:



□ Map of school



□ Three packs coloured (dots) stickers (red, orange, green)



There are certain places in school where bullying occurs the most, frequently in areas where adults are not around. Students are often present, and know where bullying happens, when it happens and lots more information.

## Method

### Part 1:

Each class is given a map of their school or they make maps of their school grounds. Students can pick two stickers each and identify on the map:

**Red** feels unsafe

**Orange** feels mostly OK, but sometimes not

**Green** feels safe.

### Part 2:

Ask students:

- What could they do to help make those areas safer?
- What could the school / staff do to make those areas safer?

## Extension Activity:

Teachers and/or students discuss and determine:

- The design of a school environment survey and how it will be undertaken.
- How the data will be collated, analysed and presented – either within a class, to other classes or across the whole school.
- The process for identifying and implementing solutions to increase the safety in areas where bullying issues are identified.
- The process for monitoring/evaluating the effectiveness of the solutions implemented.